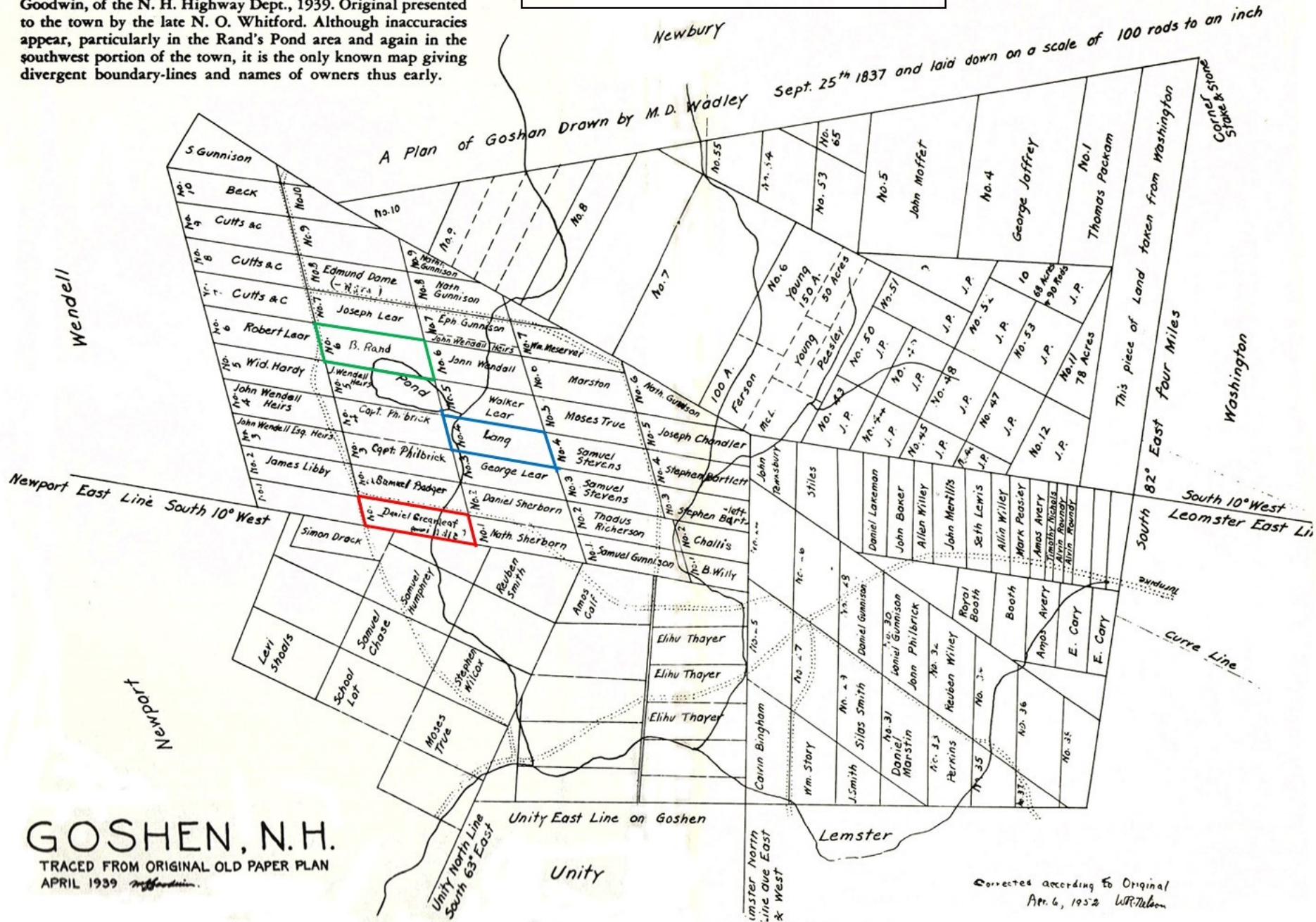


Map showing the location of Goshen's first settlers:

**RAND GRINDLE LANG**

Wadleigh's Map of Goshen, dated 1837, copied by M. G. Goodwin, of the N. H. Highway Dept., 1939. Original presented to the town by the late N. O. Whitford. Although inaccuracies appear, particularly in the Rand's Pond area and again in the southwest portion of the town, it is the only known map giving divergent boundary-lines and names of owners thus early.



**GOSHEN, N.H.**  
 TRACED FROM ORIGINAL OLD PAPER PLAN  
 APRIL 1939

Corrected according to Original  
 Apr. 6, 1952 W.P. Nelson