

GAZETTER OF THE WORLD





# INDEX

Subject	Page
Alderton	1
Birch valley	2
Briar wood	4
Brush wood	7
Cape Colony	8
Checherberry Land	10
Cherrydale	11
Chipewa	13
Coast Colony	14
Elm	17
Fern dale	21
Ferndale	23
Grandrapids	24
Grassington	26
Hulkton	31
Mapleton	33
New poplington	34

# INDEX

SUBJECT	PAGE
Poplington -----	41
Rockburn -----	46
Rock Island -----	48
Sand Island -----	49
Trappers Land -----	51
Twin Pass -----	54
Willows -----	55

## MAPS

Big Continent	57
Long "	58
Round "	59
Forest "	60
Sand Island	61
Rock "	62
• STATISTICS	63

R

## PREFACE

The author has endeavored to give in as few words as possible and still have it plain, the historical and geographical facts about the different places of which he writes. He also gives biographical sketches of some of the people that live in these lands, their occupation and thriftiness. This book contains many pictures which help to show to the readers the lands through which they pass in their reading.

EDITOR

# GAZETTEER OF THE WORLD

## ALDERTON.

ound C. Alderton was the last to be settled of the two divisions of Round Continent it has no large cities but has several small ones, mostly manufacturing. The wild cherry grows here in abundance so that during the fall many parties of young folks go out on a cherry picnic and gather several bushels of the fruit.

**THE PEOPLE.** The people are a sturdy race and mostly farmers some of them are quite wealthy but for the most part they are just well to do farmers with once in a

while a good one there are also a good many trappers and hunters rather more of them than of the farmers there are not many rich ones many these for there are too many of them here.

**SCENERY.** There is not much really pretty scenery in Alderton owing to its flatness. The prettiest of the scenery is Fork River, this is a wide deep river starting in Alderton and flowing northward into Cherry Dale, keeps on till it stops in the sea there are a few elevations but none of any mention. In some places the forests are very tan.

BIRCH

gled. with a wild vine  
that grows there.

BIRCH VALLEY

UNITED DIVISIONS, F.C. Birch  
valley was first discov-  
ered by William LITTLE  
and Burt Green during  
about the only battle  
that they had between  
themselves, William was  
driving Burt, so BURT  
headed straight to the  
eastward and after  
three or four days had  
sailing came in sight  
of land he supposed  
he had gone a round  
the world and had  
struck on the west  
coast of Big Conti-  
nent but instead of  
that it was a new  
continent and Birch

VALLEY

valley was the first to be  
populated, first Farmington  
sprung up composed most-  
ly of farmers who gath-  
ered in a village to pro-  
tect themselves from the  
Indians then other cities  
sprung up. A piece of land  
on the ~~west~~ coast was  
sold to Big Continent  
and received the name  
of Twin Pass then a  
piece of land was grabb-  
ed to a small party un-  
der the leadership of a  
man by the name of  
George Washington. These  
people were of a slight-  
ly different race from  
those then inhabiting this  
continent, since then no



# BIRCH VALLEY

land has been given or sold to any party outside of Burt Grech and William Little's patri-  
ality.

**SURFACE.** The surface of Birch Valley is mountainous except a small strip on the eastern coast which is level but swampy. The eye-glades are situated in this section and cover many square miles. People have occasionally got lost in these swamps and never returned. The soil is mostly rather clayey though on the western side it is quite sandy.

**POPULATION.** The people are mostly trappers of a healthy nature. There are but few farmers, the most be-

ing at Farmington.  
**SCENERY.** The scenery of Birch Valley is grand giving some very fine mountain views there



A house at Mountain City -  
also Paradise Lake affords some lovely scenery. This little lake is situated about two hundred miles east of Farmington at the foot of a very steep mountain. On the other side it is a gentle slope to-

## BRIARWOOD



Paradise Lake  
wards the sea. There are  
no rivers of any size

## BRIARWOOD

BIG CONTINENT Briarwood  
includes nearly a third  
of all Big Continent.  
It is about 20,000  
miles long by the wide  
in width at its wide  
est places. Portions of it  
were discovered by Cham-  
berlain and others. There have  
been but a few battles

found in Briar wood  
SURFACE. The surface is level  
in places and mountainous  
in others. Along the western  
coast is a long line  
of mountains only broken  
by the Great River. on  
the east coast is Nelson  
Mountain and the end of  
Coast Range Mountains. Be-  
tween these is a vast fer-  
tile plain with here and  
there a hill, lake or river.  
Briarwood is noted for  
its immense amounts of  
blackberries that are picked  
- Great River Bridge



# BRIARWOOD

5

That are picked each year, hundred of quarts are picked each year at the largest best black berries ever seen in the world

PEOPLE, The Big Continentals are a vigorous and enterprising people there are a good many farmers also mercantiles, shipbuilders, etc

SCENERY. The scenery is very



Great Cave

beautiful in some places in Briarwood. Among the larger lakes in Briarwood is, first, Great Lake a very large sheet of water on the west coast - only several hundred miles inland and containing three or four large islands - on these are several summer



An island on Great Lake houses. Second is Newfound lake a lake that was discovered about twenty years ago this

6.

## BRIAR WOOD

is so far north that it is not much visited by summer visitors and abounds in fish and wild game. Third is Spectacle Lake situated on the west side of the Coast Range mts and connected to the sea by a large river called the great River over which the great bridge is put which is the largest in the world, and fourth is Three corner Lake situated with in a few miles of the sea. This is quite a beautiful Lake. Briar wood has more lakes than any other division of the same.

size. Another curiosity is the great cave beneath Nelson Mountain. This has



Map of Great Cave

many passages and small lakes, guides are always ready to show people around in this cave.

CITIES. The principal cities are Nelson City, Point City and some other smaller ones.

# BRUSHWOOD

MINES. The chief mines are of coal which are situated on Long Mts.

## BRUSHWOOD

LONG CONTINENT. Brushwood is a division on the very southern end of Long Continent mostly covered with brush and trees. There is no city and but few inhabitants the most of these being trappers.

SURFACE. The surface is flat sloping towards the sea. it has but very few hills and is quite swampy in places

PEOPLE. The people are

trappers who live by hunting and trapping and as a consequence are very healthy and strong. There are a few farmers but not



Hunters cabin. but a few these do not make much of a living but still enough so that they do not starve. The trappers of Brushwood have had several calls for valent. feet to the army and

# CAPE COLONY

always respond with  
a large number.

## CAPE COLONY

FOREST CONTINENT. Cape Colony belongs to Big Continent, and was not settled till some thirty years ago but since then it has increased rapidly in population though now it is not very thickly settled.



Forest Doll

Cape Colony is mostly covered with woods except where cleared for farming and for villages. The forests abound in mouth of Blue River



deer, moose, bear and other wild game while for bushing animals inhabit the rivers.

SURFACE. The surface is rather uneven as it lies at the foot of the Trappers Mountains and has some mountains of

## CAPR

its own, but along the  
sea it is quite level.  
PEOPLE, The inhabitants  
are mostly immigrants  
from Coast Colony and  
New Poplington though



### The Distant Mountains

a few are from Big  
Continent, but not but  
a few, the people are  
engaged is fishing for  
the most part as the  
land is not very pro-  
ductive and fish plenty

## COLONY

9

many fish are annually  
caught here by the  
people and sold to  
the inhabitants of  
the United Divisions,  
SCENERY. The mountain  
scenery is grand, the  
mountains can be  
seen towering to a



some of the coast  
great height in the  
distance, the coast  
scenery is rugged  
and broken but is also  
very picturesque,

## CHECKERBERRY LAND

CHECKERBERRY LAND  
 FOREST CONTINENT. <sup>years</sup>  
 After that forest continent  
 was discovered, these  
 people came and settled  
 on a portion of the  
 continent not inhabited  
 at that time and set  
 up a little republic  
 of their own, and as  
 they seemed peaceable  
 they were not disturb-  
 ed. Here they have lived  
 tilling the soil some  
 and doing a good deal  
 of fancy work.

**SURFACE.** The surface  
 of checkerberry land  
 is quite flat, and slopes  
 a little towards the  
 sea. It has but few

hills and no mountains.  
 It is mostly forest clad  
 except where some farmer  
 has cleared it for his  
 use. It is most noted for  
 the checkerberry or  
 winter green plant which  
 grows there and for  
 the checkerberry Soda



A Soda ~~factory~~ <sup>factory</sup>  
 which is manufactured  
 from it.  
**PEOPLE.** The people are  
 said to be the pretti-  
 est in the world, and



# CHEERY DALE

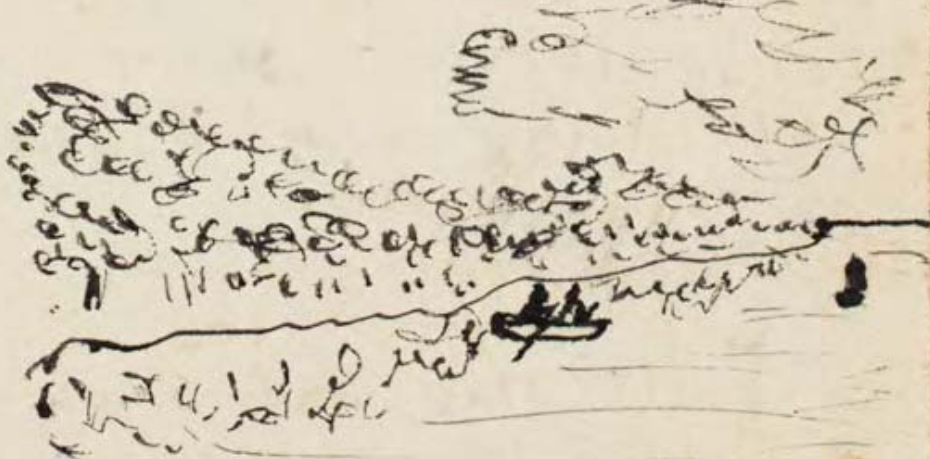
are tall and muscat.  
BOUNDARY. North by Fern-  
dale. East by Trappers  
land, South by Grand  
rapids and West by  
the Black Ocean.

grow here in great  
abundance, and when  
they are ripe the boys  
and girls go out in  
parties and gather  
them by the bushel,  
They then are kept  
for their own use or  
are sold to some store  
for groceries. They are  
then sent of to more  
distant markets.



## CHEERY DALE

ROUND CONTINENT. Cherry  
dale is the part of the  
two divisions of Round  
continent. It contains  
a portion of Fort Rivier.  
It chief article of ex-  
port is wild cherries which



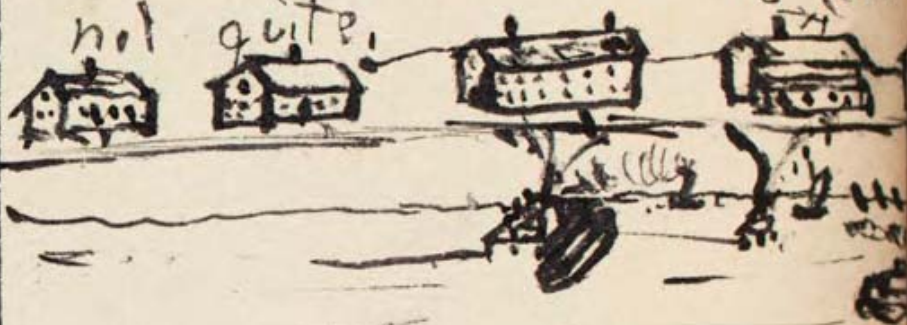
The Coast

## CHERRY DALE

PEOPLE. The people are mostly trappers there are but few farmers in this part of Round Continent. Though there are a few towards the northern border. As a consequence furs are low here and traders from Big Continent come here and buy furs of the people at a price that they get rich on when they get back to their country.

SURFACE. The surface of Cherrydale has but few elevations, and these are nothing

but hills. Some places along the coast are bordered by hills that might almost be called mountains but not quite.



seen near mouth of the  
SCENERY. The coast scenery of Cherrydale is quite grand as the coasts are deeply indented by bays, strips of land often running far out into the sea. Then the scenery of that part of Fork River which is in Cherrydale. Steamers are seen

plowing their way from  
port to port.

## CHIPEWA

FOREST CONTINENT. Chipewa  
is inhabited by a nation  
of new origin. Long after  
that forest continent was  
discovered a nation land-  
ed on its shores and  
as a grant of land  
at the president of the  
United Divisions, it was  
granted and the took a  
strip of land on the  
west coast. It was en-  
tirely covered with forests  
of spruce, hemlock, fir, maple  
and many other trees.  
Chipewa is especially  
noted for the oak forest  
which it has. These are  
the only oaks in the

## CHIPEWA

13

world to any extent.  
The nation settled down  
and soon had cleared  
considerable land and  
built up a city or  
two.



SURFACE. The surface is  
level with an occasional  
hill and slopes  
slightly towards the  
sea. It is covered most-  
ly with forest yet  
and may never be-  
come wholly settled

14

## CHIPPEWA

The soil is good and some fine crops are raised here. The soil is rather sandy and dry but will raise good crops for all that.

PEOPLE. The people are mostly industrious farmers, have good farms and plenty to eat. There is still room for more farmers in Chipewa as the land is



A Great Oak

not all taken up yet.

SCENERY. The scenery is nothing very great except in some places. George town is quite an important little place and quite pretty, the sea coast



SCENE ON COAST  
in some places is also pretty.

COAST COLONY  
FOREST CONTINENT. Coast Colony is a large division belonging to ~~the~~ ~~Continent~~ ~~Big~~ Continent.

COAST COLONY

It was bought by that  
 country some time after  
 that the continent was  
 settled. It is situated  
 on the east coast of  
 the continent next to  
 the south bend of the  
 coast. It has several  
 cities and villages but  
 is mostly covered with  
 forests.

SURFACE. The surface is  
 mostly level as all the



LILY LAKE

countries along the  
 coast are with once  
 in a while a hill.  
 A low ridge of mount-  
 ains or hills run  
 through the east part  
 of it white to the



White River  
 west of them is a  
 vast basin through which  
 flows the white river  
 There is also a small  
 lake on this river  
 besides one on one  
 of the islands of the  
 sea.

16

COAST

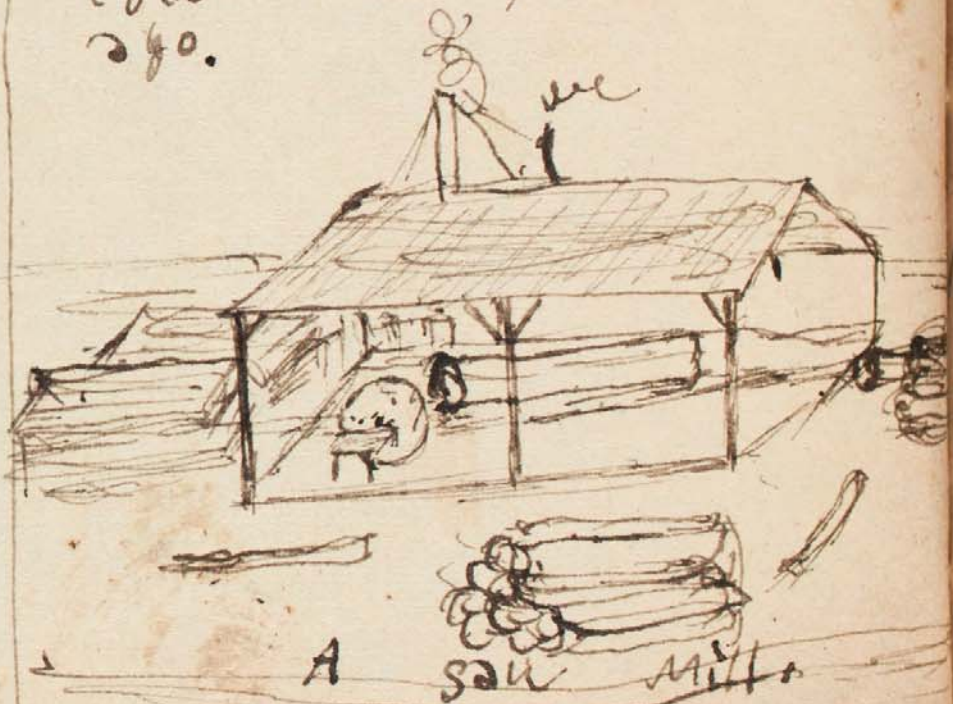
PEOPLE. The people are descendants from Big Continent and have their thrift and enterprise, they are wealthy and are mostly farmers, though there are some ship builders along the coast

SCENERY. The scenery is very pretty along the rivers and lakes besides many pretty country views. Yellow fields of grain with the green field and woods for a background made a pretty picture for an artist.

There are several cities

COLONY

an Coast Colony the largest of which is Fairy Dell which is the largest city and capital. Then there is Winterville a seaport belonging to the United Divisions there was another city belonging to those divisions but it was bought by Coast Colony some time ago.



A saw mill

ELM FOREST CONTINENT, This is one of the United Division and is mostly the home of the trapper there are several lakes and rivers which are the haunts of the deer, moose, bear, beaver and many other wild animals and are eagerly hunted after by the hunters and trappers.



A Beaver Dam

region, and they make a good sum every year as firs are high

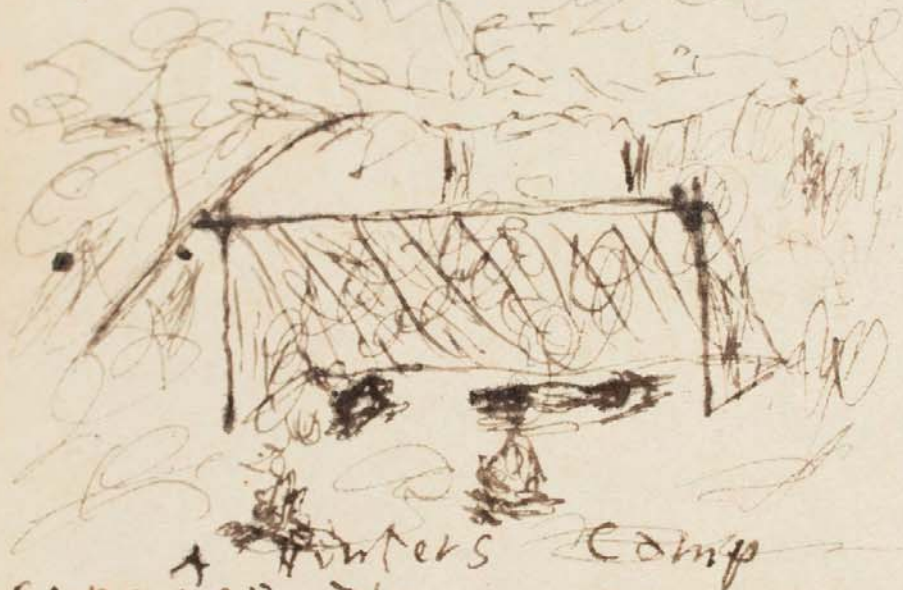


Scene by Lake Side

and but few are got except on Forest Continent along the trappers Mountains. Elm is slowly becoming more settled - though it will be years before it becomes very thickly settled. Elm is now divided by a small strip of land

18

owned by New Pop-  
 lington called Willows  
 but the government has  
 decided to sell no more  
 land to foreign nations  
 so that Elm will be  
 the same here after



A winter's camp  
 SURFACE. The surface is  
 mostly mountainous with  
 but few low lands, the  
 long range of the trap-  
 pers mountains extends

E L M

the whole length of  
 this Division and slopes  
 off on one side to  
 Coast and Cape Colonias  
 and on the other side  
 to New Poplington except  
 on the southern end where  
 where it slopes clear to the  
 sea. Along the Eastern  
 and Southern Coasts there  
 is a narrow strip of  
 level land but it is  
 but little cultivated as



A clearing



yet.  
 PEOPLE. The people are  
 a race of hardy pioneers  
 and are descendants from  
 the first colonists that  
 set foot on this deso-  
 late shore they mostly  
 take to trapping and  
 hunting as a business  
 though some are farm-  
 ers. Most of the pas-  
 sages raised in the  
 world are grown near  
 the prison, a large  
 city in the central  
 part of Elm. Many  
 of the best furs in  
 the world are caught  
 around the large lakes  
 in the southern part  
 of Elm. There are  
 several cities in this

part of the Division.  
 MINES. The principal mine  
 of Elm is the coal mine  
 at Prison a few years  
 ago it was worked a  
 good deal but is not  
 being worked so vigorously  
 now. The mine extends  
 way back under the  
 mountain for about a  
 mile. It is the largest  
 coal mine on the continent  
 though the one at Allenstown  
 is about as big.



THE MINE

20

ELM

SCENERY. The scenery of Elm is extremely varied including the wild mountain scenery and that of the lowlands. About the prettiest scenery is in Hazelton around the lakes these lakes are, Big Wolf, Little Wolf and one or two other smaller ones. The largest of these lakes is about



North side of Big Wolf Lake twenty miles long by ten broad and has but very few islands in it, on the north side of the lake the mountains tower up to a

great height and nearly overhang the lakes. fish of all kinds abound in the lakes while beaver, otter, mink and muskrat live in its banks. Deer, bear, lynx, panther and many other wild animals haunt the mountains and afford a



Mountains above lake good living for numbers of hunters. The scenery along the seacoast is quite good but the shores are for the most part low and sandy. They are a little precipitous on the western shore of Hazelton.

FERNDALE

LONG CONTINENT. This is in the central part of the continent between Rockbuh and Hulkton. It is not as much settled as some other parts and if any thing is more open. There is one great summer resort on Ferndale near the center and is called the Picnic Ground



A road near Picnic Ground

The chief occupations in Fern dale are farming and hunting and trapping. Farming in summer and hunting and trapping in winter game abounds in the forests



A cascade

SURFACE. The surface is level forest covered plains with only an occasional hill or small plevavation, but it is mostly a great forest covered plain dotted here and there with the clearing of the farmer or hunter with its cabin

22

## FERN DALE

In the northern part is the plains where are located the great world renown picnic grounds where the World Exposition has been held once or twice. To the south are the forests of cherry and Maple while among them all is the drooping green fern which helped in the naming of this division.

PEOPLE. The people are the same as inhabit all Long and Round Continent and part of Forest. They are a rugged race, filling their land and living well on both farm and forest products. Some of the occupations are bracknet and other small

thinket making, writers, farmers hunters and many others. There are not very many rich people but they are all well off.

SCENERY There is not much to be seen except long wastes of forest with an occasional cleared town and the great level picnic grounds and the sea shores. The latter is



A PRETTY BAY  
about the only thing of interest, the land is cut in to by small bays and coves

# FERN DALE

Forming fine retreats for fish of all kinds, the shores are rather rocky as a general rule.

## FERN DALE

FOREST CONTINENT. This land was formally a part of Trappers land but was granted to The Fern Islanders a few years ago. These had lived on Long Continent but getting sick of their situation they asked for a grant on Forest Continent and have lived there since.

SURFACE. The surface is mostly level. Fern Dale lies at the foot of the lofty Trappers Mountains, and

23  
stretches from their foot over sandy, forest covered plains to the seacoast. The forests are mostly those of birch, cherry, and evergreen trees such as hemlock and fir with an occasional spruce. The ground is covered in most place where it



A cultivated district is not cultivated with the checker berry plant which is used a good deal in making tea

PEOPLE. The people are of good size as a general rule good looking. They are as a most part engaged in farming and manufacturing. These are carried on to quite an extent.



SCENERY The scenery is nothing grand but pretty for all that.

large cultivated fields and lofty open forests the ground of which is covered with checker-berry plants and other forest plants

GRAND RAPIDS FOREST CONTINENT. About a hundred years after the discovery of Forest The Rock Islanders got discontented with their homes on Mountain Island and as there was not room on Rock Island they sought a home on the New and but little settled forest continent. They took a boat and set out and soon arrived at their new home here they built themselves

# GRAND RAPIDS

25

cabins to live in, then began their labors on the ground

**SURFACE.** Grand rapids has a level but rather rolling surface, covered



A coast scene mostly with forest of birch or cherry with some fir and spruce. The surface is but little broken by hills. The coasts are very regular and slightly curving. Grand rapids lies between Ferrisdale and

Twin Pass on the North and South, and Elm and the Ocean on the West and East.

**PEOPLE.** The people are of rather a warlike disposition, but industrious, tilling their farms and raising good crops, but like most places owned by them, it is not very thickly populated.

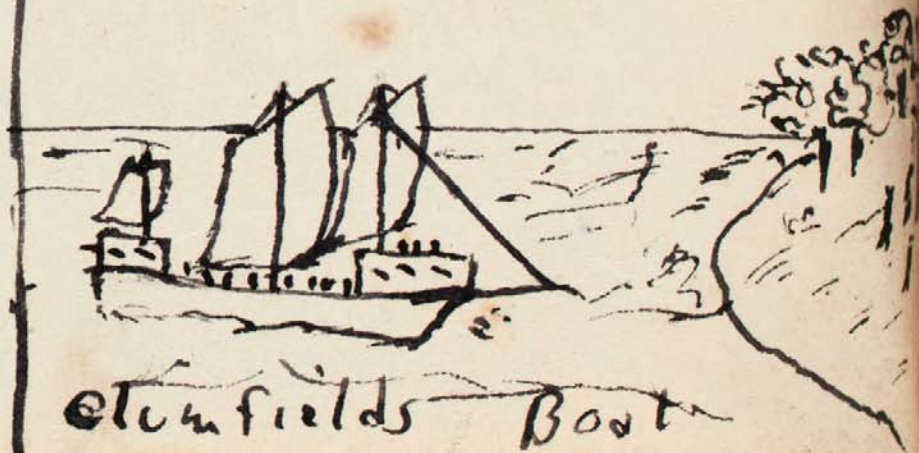


A Birch Forest.

## GRASSINGTON

GRASSINGTON  
 BIG CONTINENT, Grassington  
 is the chief division of  
 Big Continent. It was  
 on the West Coast of  
 Grassington that Guma  
 field landed after fleeing  
 from his foes across  
 the ocean. It was here  
 that David Blog was  
 hung for his bad  
 government of the  
 colonies. It was in  
 the mountains of Grass-  
 ington that the first  
 city was founded by  
 several sick soldiers  
 who could not stand  
 it to march over the  
 mountain to the plains

beyond, on the plains the  
 company that succeeded  
 in crossing the mountains  
 encountered the Indians  
 and defeated them. On  
 the plains of Grassing-  
 ton the second city  
 was founded by these  
 same bold explorers.  
 This city is now the  
 capitol of Grassington  
 It was in Grassington



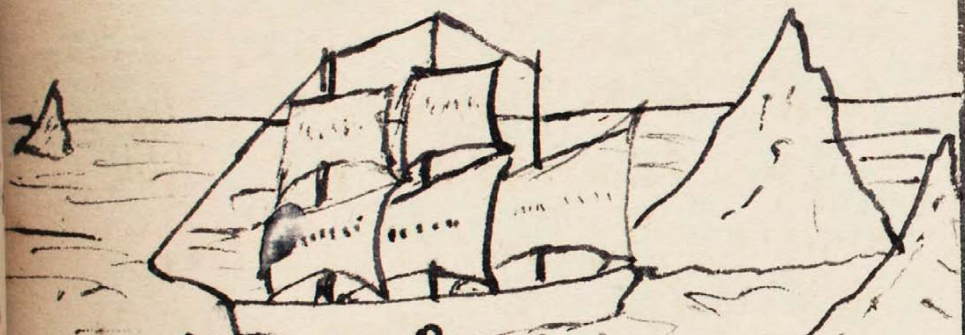
Gumafield's Boat



# GRASSINGTON

27

That the great Presidents  
George Allen and his  
son Ethan were born.



Allen's Explorer  
It was from Bay  
Point that George  
Allen set out with his  
ships to explore the arctic  
regions. The great battle  
of Granite Hill was  
fought in Grassington  
near Bay Point in  
which the Long and  
Round Continenters

were routed front and  
flank. In Grassington etc  
the greatest cities and  
the most manufactories.  
There is no division in the  
world of so much im-  
portance as Grassington.



at Allen  
SURFACE. Along the west  
coast of Grassington runs  
the Long Mountains, a  
high and inaccessible  
mountain in places,  
abounding in drift and  
other forest animals.

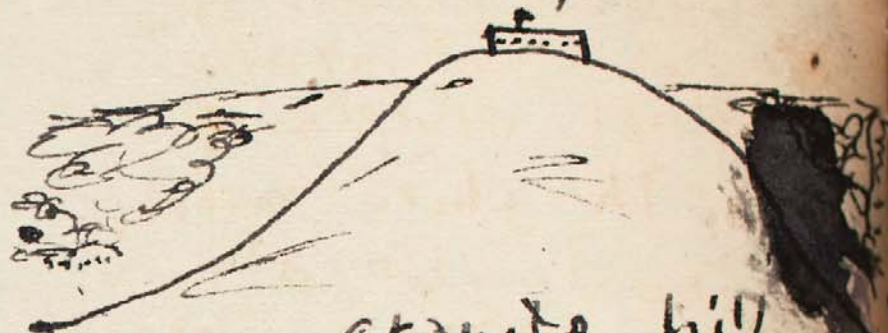
91  
28

# GRASSINGTON

The central part of grassington is a vast plain stretching from Poplaraton to Bridgwood and from the Long Mts to the Coast Range. These prairies were once inhabited by large herds of buffalo who roamed the prairies and served as meat for the roam-



ing Indians. Next comes the Coast Range Mts



Granite hill a much lower range than the Long Mts. The road from Happy City to Picnic City runs over these mountains. These mountains run the whole length of Grassington and into the divide on each side. Beyond these mountains lies a narrow strip of fertile land. In this strip lies

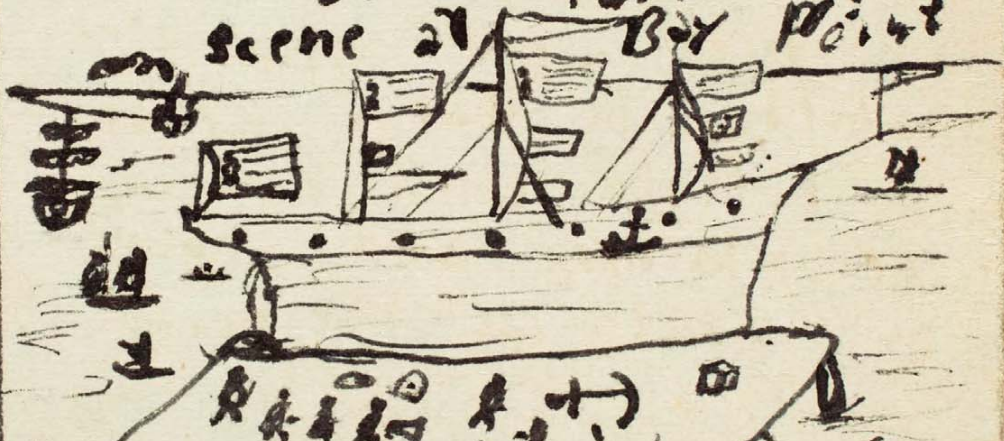
~~CROSS~~ SINGTON

the cities of Pickie  
and Coast Range No 2  
in Grassington and  
one or two others in  
the other divisions.

Mines. The chief mines  
of Grassington are in  
the mountains these  
consist of coal, gold  
and iron besides some  
minor ores. There is a  
large mine of coal  
to the west of Happy  
City and other small-  
er mines in the Long  
and Coast Range Mts.

PEOPLE. The people are  
a driving race, they are  
the most noted for

the ships that are an-  
nually built here. A good  
deal of manufacturing  
is also done here, the  
people are also engag-  
ed in some farming.



scene at Bay Point  
The great Presidents of  
Big Continent have all  
been born in Grassing-  
ton. The very thrift of  
the country is proof of  
the driving nature of  
its inhabitants.

30

# G. GRASSINGTON

SCENERY The scenery of Grassington is very grand and beautiful. In the Long Mts are many peaks of great height and grandeur. Among them are Mt Allen (27000 ft) and Peak Ethan (22000 ft)



these two are the tallest and most grand peaks of Grassington. The coast scenery is very beautiful also

as it is broken by many bays and rivers, Bay point has very fine scenery as it extends out into the ocean many miles, from



Muskat River  
This ships and steam-boats of all descriptions can be seen going, too and pro.

CITIES. The principle cities are Picnic, the capitol, Happy, Mountain and Coast Range. No 2

# HULK TON

31

~~ROCK~~ HULK TON  
CONTINENT. This is  
the chief division of Long  
Continent, as it contains  
the capital and largest  
river. It was at Hulk-  
ton that the first dis-  
covery was made, and  
history has it that  
the explorers sailed up  
Escape river, and after  
going some ways stop-  
ped, one or more of  
their number then  
got off, but while ashore  
they wounded a pan-  
ther which chased them  
to the river bank, and  
if it had not been  
for the boat near

would have devoured  
them from this in-  
cident the river re-  
ceived its name. Es-  
cape River.



Explorers on Escape  
SURFACE. The surface is  
rather rough but  
there are no high hills  
or mountains, the land  
gradually slopes towards  
the middle of the  
continent where it  
forms a sort of

32

plateau, which extends through all the divisions except brush woods. The soil is mostly good but is little cultivated, it being mostly covered by forest.



SCENE ON GILLEY RIVER. The people are of the rugged trap-per origin, all hardy and given more or less to trapping, hunting and fishing. They do some farming and

# HULKON

manufacturing.



LONG CONTINENT TRAPPING CITIES. The capital of the whole continent is Little city and is located in Hulkon beside of a small lake called Little Lake. This is the principle city but there are some smaller ones. Little city is noted for the books published there

# MAPLETON

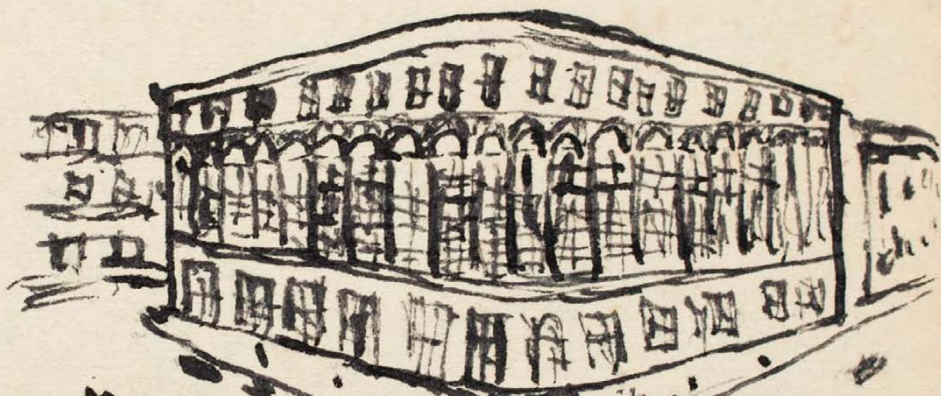
33

## MAPLETON

FOREST CONTINENT. This country was settled by William <sup>Strong</sup> and a small company of people from Long Continent, when they settled here, they founded a colony of their own, and not being molested by any of the governments around it, this little government has kept separate from the rest in respect to government.

**SURFACE.** The surface of Mapleton is mostly level like most of the other land to the west of the Trappers Mountains

It slopes a little to the South, especially the eastern part.



**Wm. Strong's Store.**  
**PEOPLE.** The people are great farmers, and do as much farming as any nation for the size of their country but as the land is not of the best, their products are not as large and nice as those of other places. Many of the people of Mapleton go to warmer

countries during the winter and come back to till their land during summer,

A Farm



Checkerberry City is the principle city of Mapleton, in fact it is about the only city in Mapleton. William Strong has a large store here at Mapleton, a large wholesaler supply store besides

being, a retail store. Wm. Strong also owns many other houses and mills here,

NEW POPLINGTON FOREST CONTINENT. This is the most noted division on Forest Continent. It has the largest city, the largest store, the best farms and many other things. It was first given to the Big Continentes to settle it was not then as large as it is now but ~~was not~~ many battles having



NEW POP LINGTON 231  
been fought on its  
borders it has chang-  
ed some. One of the  
first battles was one  
on the North-western  
border over a small  
tract of land covered  
by Hazle bushes and  
of no great conse-  
quence any way. It  
was won by the New  
Poplingtons and be-  
came a part of that  
place. But a few years  
later, war again broke  
around this little place  
which in history is  
called the "Thirty days"

POP LINGTON  
or "Border War" this  
lasted some over a  
month and was the  
scene of a good



A Park Scene

deal of fighting in  
all parts of New  
Poplington, and which  
resulted in the  
re-taking of this  
small piece of Forest  
land. There have been  
other battles in which  
the New Poplingtons

26

W NEW  
 have taken part,  
 SURFACE, the surface  
 of New Poplington is  
 quite level though there  
 are a few hills and  
 low mountains. Near  
 Farmington is a  
 small mountain or  
 large hill, besides a  
 few hills in Evergreen  
 Park about northing of



Point City

## POPLINGTON

any note. The soil of  
 New Poplington is very  
 good. The largest corn  
 in the world is grown in  
 the West coast of New  
 Poplington. About the  
 only strawberries grown



W. R. Nelsons. Seed House, Allens town  
 in the world are grown  
 at Farmington, while  
 immense quantities of grass  
 is grown on the Great  
 Common East of Allens-

# NEW POP LING TOWN

57

town.  
**PEOPLE,** The people are  
 A New Poplington farm scene



of the old Big Cont-  
 nent stock, sturdy and  
 enterprising. None but  
 they could have built up  
 New Poplington to such  
 a height in so few  
 years. city after city  
 has gone up by their  
 hands, the forest land  
 has been cleared and

now we see large farms  
 yielding up big crops  
 of corn and grass  
 where once only the  
 giant forest trees stood  
 what will stop a  
 sturdy Big Continent-  
 er, neither the sterile  
 soil nor the billowy  
 sea. Out of the rocks  
 of the field they make  
 for themselves dwellings  
 and the waves of  
 the sea become only  
 a road unto them,  
 from the very soil  
 they build themselves  
 up cities, they shall  
 conquer the world.

39

NEW POPLINGTON

Some day,  
**NOTED FINDINGS** - The most  
 noted place or thing of  
 New Poplington is  
 Allens town but as that  
 will come under the  
 head of Cities I will  
 not speak of it now.  
 Next comes the 'Even  
 green Park which  
 covers many square  
 miles of forest land,  
 the park is stocked  
 with deer and some  
 other wild game  
 which is only hunted  
 by the people when  
 it becomes such  
 stocked and then  
 not for only a very

short time. This park is  
 covered with fir and  
 spruce. It contains sev-  
 eral picnic grounds  
 which are supplied with  
 seats and swings and  
 fenced off to keep  
 out all wild animals  
 which roam through  
 the park.

Allens town



CITIES The principal  
 cities of New Popling-  
 ton are Allens town, Fern.

# New POP LINGTON.

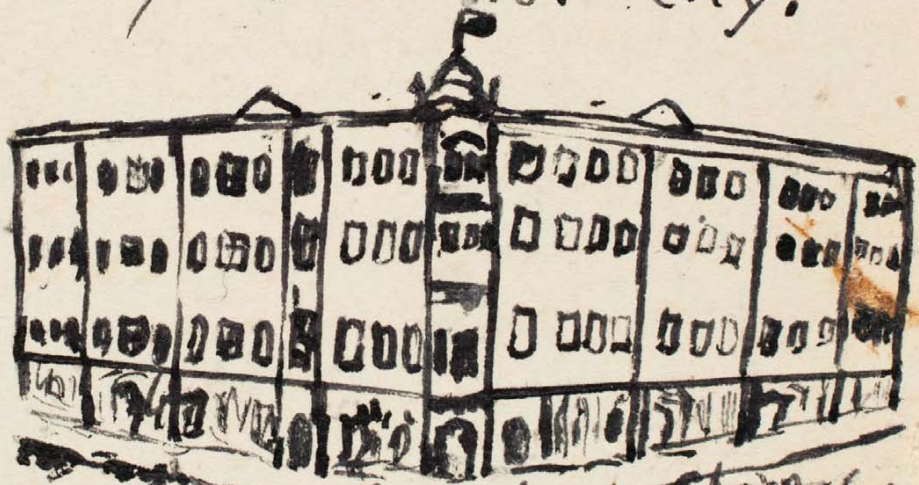
39

ton and Point City be-  
sider smaller ones. Allens town  
is the Capitol of New Pop-  
lington and the largest  
city on Forest Continents  
here is situated. The great  
Allens town store the larg-  
est store in the world and  
W. R. Nelsons seed farm is  
situated but a few miles  
to the East of Allens town



A Line Steamer

The streets of Allens-  
town are straight and  
wide and the house  
are all of modern pat-  
terns making it a  
very beautiful city.



Farming ton Allens town store  
in size and importance,  
this is located on the  
South-east side of New-  
Poplington, though not  
near the boundary. Around  
this city are located  
the great strawberry

forms, which annually send off carloads of these berries to all parts of the world, where they are bought at high prices this kind of fruit being



rather scarce, this city has not grown as rapidly as Allentown but for all of that what there is of it is as good as any other

city. The next city is Point City situated on a point of New Poplington extending out into Willbous but which was once Bim, on the east side of New Poplington this city is of no great consequence only as it used to be a port on the frontier it is situated on the side of the mountain.

SCENERY, the best of the scenery is in the Evergreen Park and around Allentown, then come the farms of the Great Common and on

# POPLINGTON

41

The western coast.

## POPLINGTON

BIG CONTINENT, Poplington is at the very southern end of Big Continent. Here several wars have been fought ~~between~~ <sup>both</sup> with the Indians and with other countries. The principle of which are the battles of "Poplington" fought, first between Gen. Bill Poroncho and the Long and Round Continenters in which Gen. Poroncho got beaten and the second time between Ethan Allen and the Long and

Round Continenters. This time the table was turned and Ethan Allen was victorious, his phimies were driven into the sid. There have been several small outbreaks of the Poplington Indians,

MT  
FRANCIS



the only tribe that is left of the many that used to inhabit this region

## POPLINGTON

SURFACE. The surface of Poplington is rough, bounded on three sides by mountains besides containing mountains within. On the west running nearly to the southern end are the Long Mts whose peaks tower above the clouds, on the east and south are the Coast Range Mts



SCENE ON  
NELSON RIVER

In the interior are many lakes, the largest of which is Grand Lake about 6,000 miles long and 3,000 wide. Then come the Couple Lakes which are about 7,500 miles long and 800 wide, and Lake Ontario which is full as large. There are also several rivers the largest of which is Nelsons River. This flows about 18,500 miles.



PEOPLE. Nothing need be  
 said of the people for  
 the very fact of their  
 being Big Continenters  
 is enough to give  
 their character. Their  
 occupation is chiefly  
 that of farming and  
 hunting.



GATTLEBOR  
 POPLINSON  
 S CENERY, Poplington  
 has an immense lot

of most beautiful scenery.  
 Mt Frances is one of  
 the great attractions,  
 its head towers far  
 above the clouds, and  
 its lofty peak is always  
 covered with snow,  
 which during summer  
 sends many a small  
 brook down its sides  
 to the Couple lakes  
 and Nelsons River  
 which are at its  
 foot. The Couple Lakes  
 lie on its Northern  
 side but at a few  
 miles distance. They  
 are surrounded by  
 tall hard wood trees

which are but seldom disturbed by the hand of man. Far to the North, East and West stretches the lake till it seems to unite with the blue sky at the horizon.



SCENE IN GRAND LAKE

Grand Lake has but few islands, it is really a small inland sea. The eastern coast of Poplinton is rather

cut and indented by many small bays. Near the southern end is a curiosity which people from all over the world come to see, it is the great native wall which stretches for miles in a semicircle. This is about twenty-five feet tall by between seven and eight

THE GREAT  
NATIVE WALL

POPLINGTON.

95

thick along the top  
 at distances at  
 about eighty rods are  
 small look out houses  
 large enough to  
 hold two men. It  
 is quite evident that  
 this was built by  
 a more enlightened  
 race of beings than  
 the savages that  
 now inhabit this  
 continent, but though  
 some have made some  
 guesses, no one knows  
 who built them or  
 when they were  
 done. and probably  
 no one will ever  
 know.

MINES. The principle  
 mines are those of  
 gold in the Song Mts  
 and silver in the



ETHAN  
 F  
 ALLEN

Coast Range Mts which  
 are worked to any ex-  
 tent. Smelting of silver  
 is done to some extent  
 at Coast Range City  
 No. 1. This city is  
 about forty in the

46

## ROCKBURN

date of settlement but  
is still farther behind  
in population. The most  
of the gold and silver  
is taken to Placerville  
city and coined. The  
Poptington Indians now  
have a reservation of  
their own between the  
divisions of Popting-  
ton and Grassington  
and are carefully  
guarded.

ROCKBURN  
LONG CONTINENT. Rockburn  
is in the very Northern  
part of Long Continent  
and its Northern point

extends far out into  
The Cold Arctic Ocean  
where none but polar  
bears and seal can  
stand it through the dark  
winters.



Rockburn is mostly in-  
habited by trapping and  
seal fishers, the most  
hardy of all people.  
The Southern part of  
Rockburn is consider-

# ROCKBURN

: 47

ably warmer than the Northern part and vegetables can be grown here a little but there is but little farming done.

**SURFACE** The surface of Rockburn is rather rough it has one or two mts the principle one is Rock Mt which looks very much like a giant rock heap. The trees



growing up between the huge rocks - as we see raspberry bushes in our small stone heaps.



WILLIAM  
LITTLE

**PEOPLE**, The people of Rockburn are descendants of the first discoverers of the Continent and as I have said, they are mostly trappers and hunters. There is no scenery of any very great

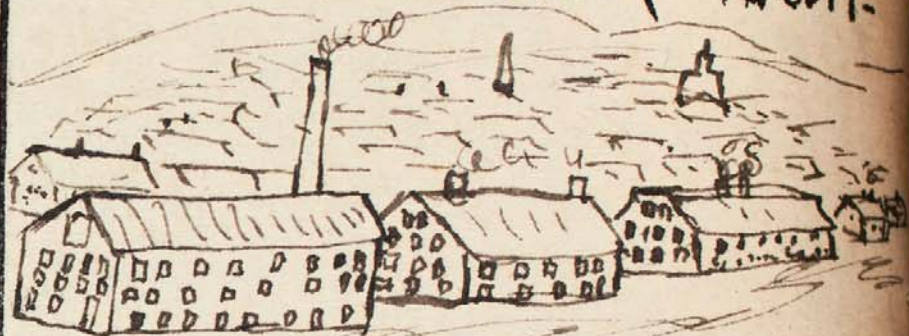
48

Rock  
 beauty, Rockburn is sur-  
 rounded on three sides  
 by the oceans and on  
 the south by Fern Dale  
 there are some mines  
 of iron around Rock  
 Mountain.

ROCK ISLAND  
 Island Ocean. Rock  
 Island lies between  
 Big Continent and  
 Long Continent. It has  
 been the seat of  
 several wars. It has  
 been attacked by the  
 Big Continenters once  
 or twice, in which  
 they were beaten.

## ISLAND

where they first came  
 from is not certain  
 but from their traditions  
 and stories it is  
 evident that they came  
 from the Black Archi-



pedago <sup>small city</sup> some time after  
 that the continent each  
 side of it were dis-  
 covered, they got rest-  
 less a few years ago  
 and got some land on  
 the new continent of

# SAND ISLAND

49

Forest which bears the name of Grand Rapids mentioned farther back

**SURFACE.** The surface of Rock Island is rough, ~~and~~ uneven and unproductive, it is really the top of an ocean mountain raised a little above the ocean level

**PEOPLE.** The people are industrious but a little warlike, their industry is mostly confined to agriculture, as there is no water power for manufactories and the foreign markets are

quite a ways off

## SAND ISLAND

Sand Island was discovered by Rock Islanders and is peopled by them. It lies to the south of Forest Continent between the three great oceans, the Antarctic on the



A MELON PATCH

## SAND

South, the Island on the West and the Black on the East. As the name implies it is a vast sand bar of quite a round form, though not very fertile, yet it produces quite crops, here the largest quantities of beans are raised of any place in the world, watermelons is also a paying crop here as here is about the only place that this delicious vegetable is raised, in a ride across the island, here

## ISLAND

of beans or watermelons can be seen along the road or in the distance.



The island is but thinly populated so the farms are not crowded nor all the land cultivated. SURFACE. The surface is uneven, broken by low rocky hills and sand



## TRAPPERS

drifts, There is scarcely any wood upon the island the only wood being on the west coast. There is no scenery to speak of, rough sandy lands stretch away on one hand and the wide ocean on the other hardly ever disturbed by craft of any kind

PEOPLE. The people are emigrants from Rock Island and Grand Rapids. They are industrious farmers raising considerable crops of beans and water

LAND  
melons.

51

## TRAPPERS LAND

United Divisions, F.C. It is the most Northerly Division of ~~Trappers~~ Forest Continent. Trappers Land contains the noted Birch Park, visited by most of those who come to the continent on pleasure trips.



TRAPPER MTS

## TRAPPERS LAND

Trappers Land is thickly wooded and is full of all kinds of game from partridges and turkeys to deer and elk and panther, here is the home of the trapper and hunter, here is where most of the furs of the world come from, here is also where some of the most hardy of soldiers come from, those who can endure the most of cold and privation, Agriculture is but little carried on here as the

soil is not very good SURFACE. The surface of Trappers Land is broken by the Trappers Mts which run through it from North to South it is also broken by other smaller mountains and



hills. BIRCH PARK

Rivers are scarce in this part of the continent

# TRAPPERS LAND

58

thought there are sum  
small ones and a few  
small lakes

PEOPLE. These people are  
of the hardy long and  
Round Continent stock  
made still hardier by their  
association with a wild and  
bare country, the inhab-  
itants of Trappers Land  
live chiefly by their guns

and traps, quite a share  
of the noted Trapper Army  
of Forest Continent come  
from Trappers Land

CITIES. Trappers City is  
the largest city it is  
also the capital of this  
division. There are sev-  
eral other small cities  
mostly on the western  
side along by Birch  
Park. Blue berries are  
grown in small quantities  
in Trappers Land and  
sold.



TRAPPER CITY



P.C. CENTRAL R.R.

## TWIN PASS

## TWIN PASS

F.C. Twin Pass is a country belonging to Big Continent like New Poplington and Coast Colony. To the west of it lies the Island Ocean, Chipewa on the South, Grand Rapids on the North and Birch Valley on the East, Each one owned by a different Nation, Twin Pass is chiefly a military station, here is the greatest fortification on Forest Continent, the great Twin Pass bridge

is here, it is nothing but an enormous trestle over which the trains from Birch Park cross in going to Georgetown, Dugout and Allenstown



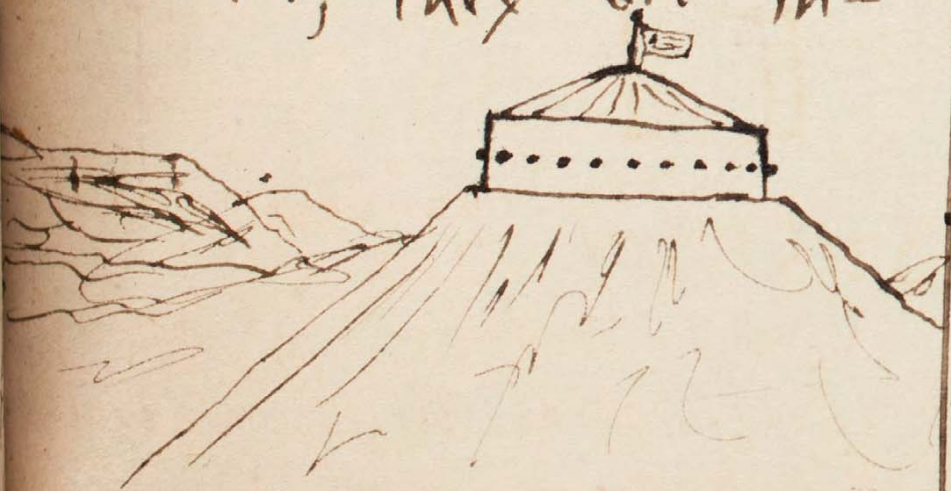
THE GREAT TRESTLE SURFACE. The surface is very uneven, broken by low sand hills and the Twin Mountains through which the great Twin Pass

# WILLOW S

SS

is cut, Twin Pass is but partially wooded, large forests of willow grow along the western shore and it is a little wooded on the North and South

PEOPLE, The people are mostly of a military character, they are in-



TWIN PASS FORT NO 4

dus trious and do some

farming chiefly raising black berries which grow very freely along the western coast

# WILLOW S

F.C. Willows is a dependant of Big Continent. It lies between New Poplington and Coast Colony, Elm lies to the North and South, New Poplington is on the west and Coast Colony on the East, willows stretches up over the Trappers Mountains and down upon the

other side, The railroad runs from Point City in New Poplington to Coast Colony, here they have to use an engine made on purpose for ascending and descending the mountain, this engine is made with a tilted boiler, so that it is about level



GREEN VILLES SUGAR REFINERY  
when going up or down

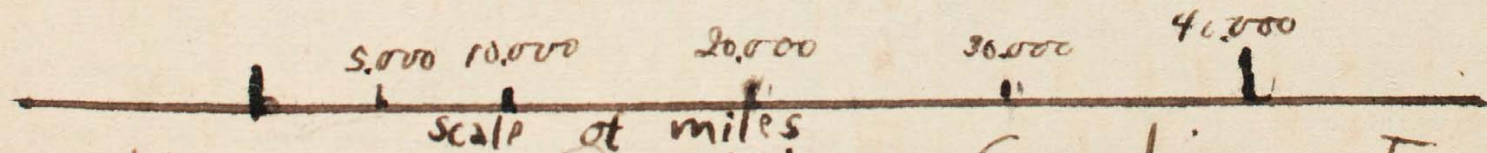
The mountain. The greatest sugar factory is situated here in willows it annually turns off many tons of sugar.

**SURFACE.** The surface is very mountainous for the Trappers Mountains pass almost through the middle running North and South  
**PEOPLE.** The people are mostly lumbermen or hunters, they are hardy and during the spring make a good deal of maple sugar

# BLACK OCEAN



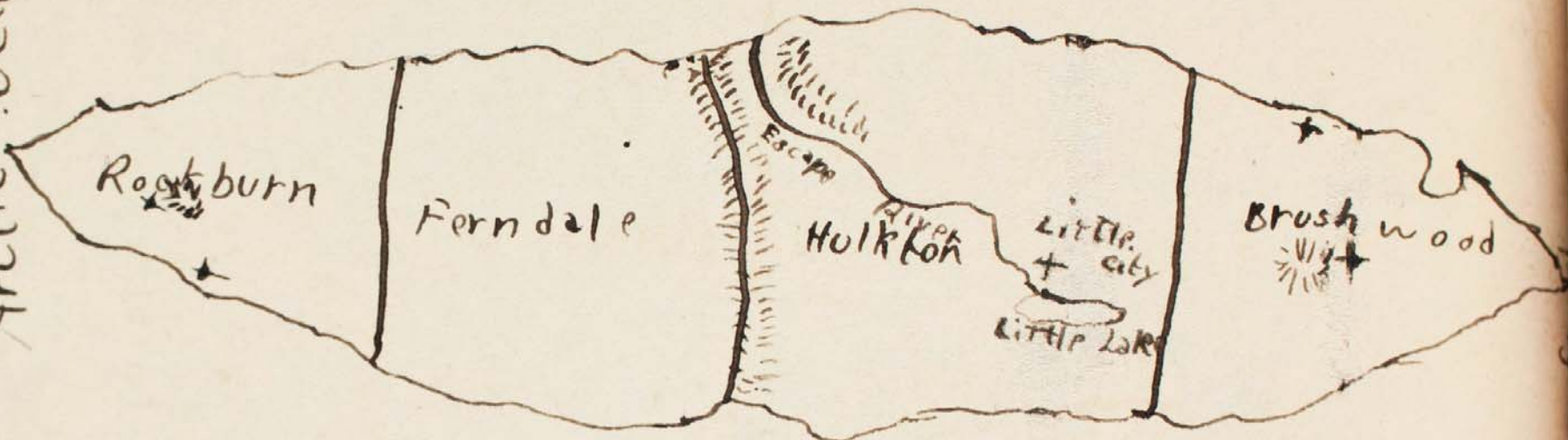
# ATLANTIC OCEAN



## Map of Big Continent

# Island Ocean

North  
Arctic Ocean



# Atlantic Ocean

5,000

10,000

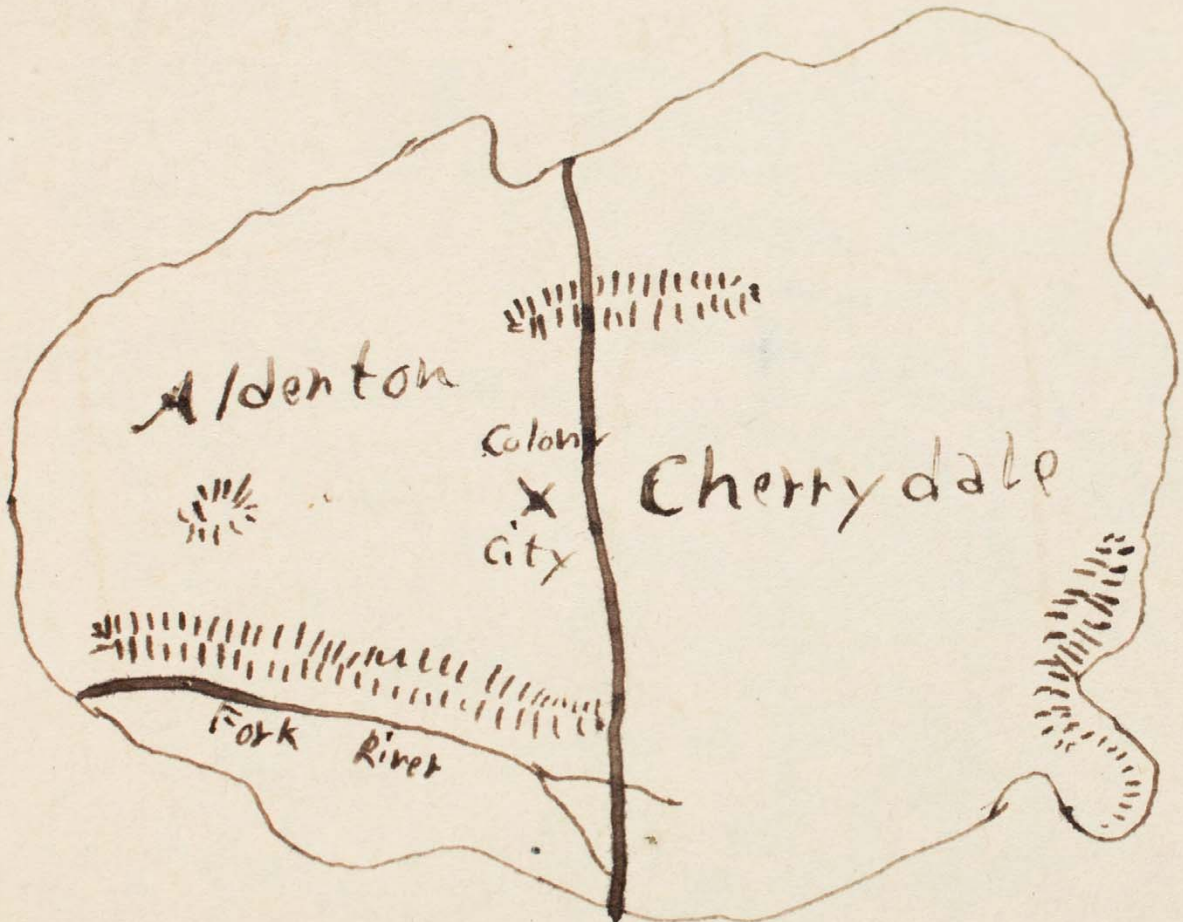
15,000

Map of Long Continent



Island Ocean

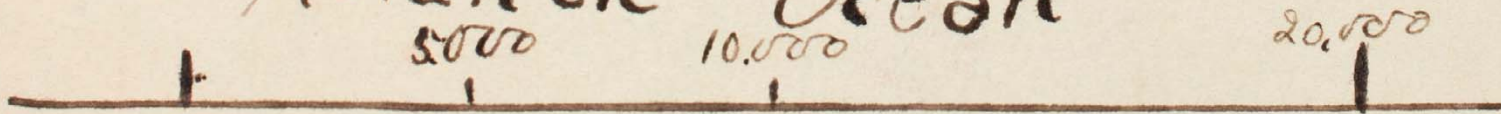
North



Antarctic Ocean

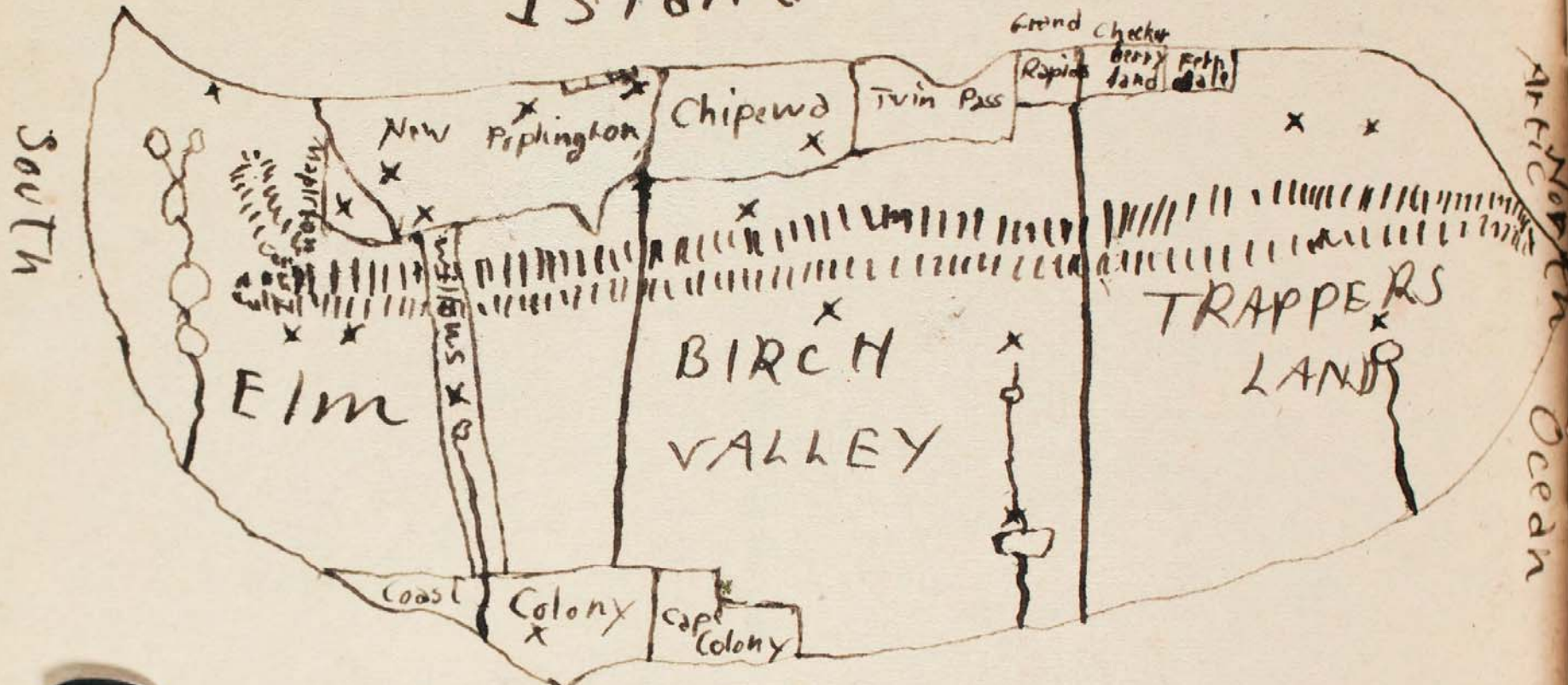
South

Atlantic Ocean



MAP OF ROUND CONTINENT

# Island Ocean



Black Ocean  
5,000 10,000

20,000

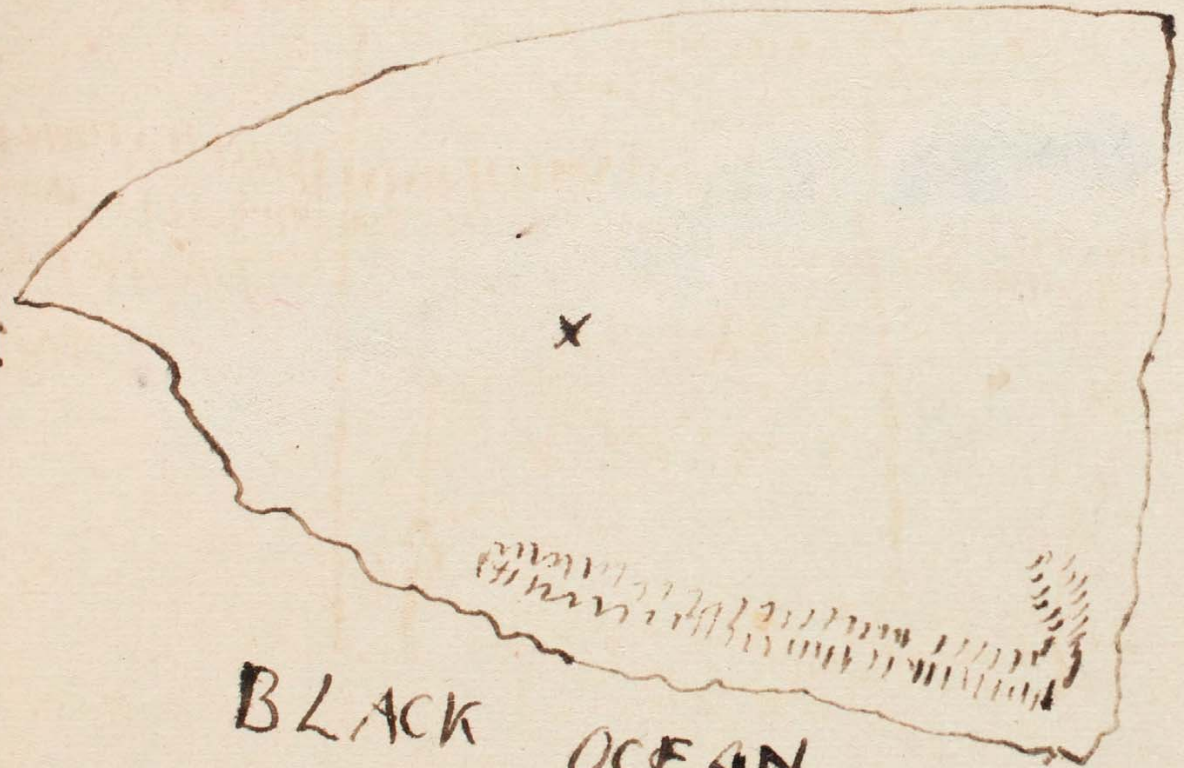
MAP OF FOREST CONTINENT

Island Ocean

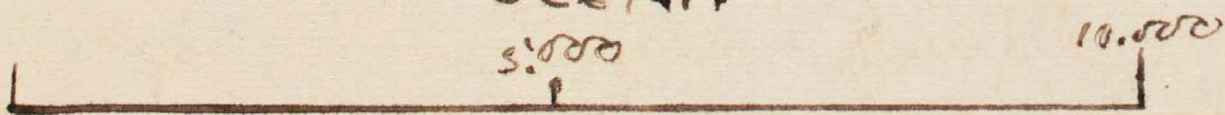
Antarctic Ocean

South

North



BLACK OCEAN



MAP OF Sand Island

IS

Fred Point

Rock

Small  
City

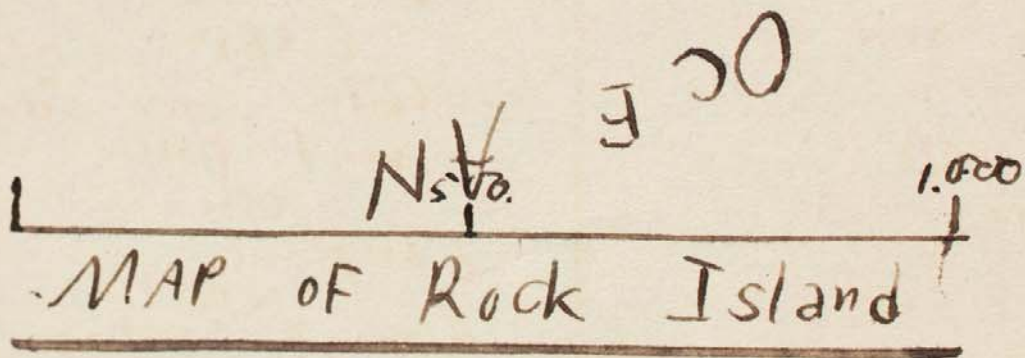
Little Fred  
Mountain

ISLAND

Warrington Bay

North

South



MAP OF Rock Island

# STATISTICS

68

## ALBERTOIX

Contains the city  
Colony City the Capital

also  
Fork River

## BIRCH VALLEY

Contains 4 cities

Dugout,  
Mountain City  
Farmington  
Paradise

The  
Trappers Mountains

And  
Paradise River and  
Paradise Lake

## BRIARWOOD

Contains 5 cities  
Lakeside  
Seaside

Fisherman,  
Nelson City  
Point.

## RIVERS

Great River  
New found River  
Spectacle River

## LAKES

Great  
Spectacle  
Three Corner  
New found

Mts and Peaks

Long Mts  
Mt. Nelson

## CAPE COLONY

Contains one city

Forest Dell

Mts  
Ganges  
River

Forest & Forest Lake

## STATISTICS

## CHIPWEA

contains one city  
Georgetown

## COAST COLONY

contains one city

Fairy Dell  
Mts  
Ganges River  
white Lake  
Lily

## ELM

contains 3 cities

Redville  
Prison  
Littleton

## LAKES

Big Wolf  
Little Wolf  
Long

Trappers

~~mt~~

River

wolf

## FERNDALE, L.C.

contains one city

Little city

Escape River

Little Lake

Mts

Sandy Mountains

## GRASSINGTON

contains 5 cities

Picnic

Happy

Coast Range No. 2

Mountain

Norfolk

~~mt~~

# STATISTICS

65

Mts and Peaks

Long Mts  
Coast Range Mts

Pk. Ethan

Pk. Allen

Granite Hill

LAKES

Lake Erie

RIVERS

Dugout  
Muskrat

MAPLETON

Checkerberry City

NEW POPLINGTON

Contains 4 cities

Allens town

Farmingtown

Point City

Kellyville

POPLINGTON

contains 2 cities

Coast Range No. 1

Lakeside

Mts and Peaks

Long Mts

Coast Range

Mt. Francis

LAKES

Grand

Couple

Ontario

RIVERS

Nelson

CAPE

Southend

## STATISTICS

## ROCKBURN

Contains 2 cities

North Troy

Dunkirk

Mt

Rocky Mt.

Point

Rocky Boy

## ROCK ISLAND

Contains

Small city

## SAND ISLAND

Contains

Rayville

Mt

Romley Peak

## TRAPPERS LAND

contains 3 cities

Trappers City

Somerset

stuttgart

Mts.

Trappers Mts

River & Lake

Trappers R. & L

## TWIN PASS

Contains

Twin Pass

Mts.

Twin Mts

## WILLOWS

Contains

Greenville



# STATISTICS

67

Mts.  
Trappers Mts  
River and Lake  
Green ~~Lake~~ Lake  
White River



THERE ARE FOUR LARGE  
CONTINENTS AND ONE  
SMALL ONE

BIG. C. which is the  
largest and richest  
LONG C. which comes  
next in point of dis-  
covery but which ranks  
third in size  
ROUND C. Third in dis-

covery and fourth in  
size, population and  
wealth

FOREST C. Fourth in  
discovery though second  
in size, Forest Continent  
is inhabited by all the  
nations of the globe,  
It also contains the most  
cities its whole number  
of large cities being  
20

POPULAR C. Better known  
as Sand Island is the  
least in size and importance

Each one of the continents  
is under the control of a  
different nation except Forest

## STATISTICS

Continent which is principally owned by Long and Round Continent with a little land owned by all the nations

## OCEANS

There are five oceans  
**BLACK OCEAN** lies between Big and Forest Continents and contains the Black Archipelago

**ATLANTIC OCEAN** lies between Big C. and the two continents Long and Round, and contains Island Archipelago and Rock Island

the home of the Fourth nation of the world

**ISLAND OCEAN** lies between the two continents of Long and Round and Forest Continent. This contains the White Archipelago near the coast of Long Continent  
**ARCTIC OCEAN** lies to the North of all the continents and is frozen the year round

**ANTARCTIC OCEAN** lies to the South of the continents and is not as well known as the Arctic Ocean

